

Corporate Snapshot

60 Years
of Technical Excellence

895 Cr
Total Consolidated
Income FY 2021-22

10000+
Projects Delivered

\$35 Bn
Worth Projects
under Management

in

63
Countries

2669
Average Employees
FY 2021-22

05
Patents

1948 Cr
Business Acquisition

Our Pillars of Success

Vision



To be an Internationally Respected Engineering Consultant offering Comprehensive Solutions.

Mission



Provide Technically Excellent and Innovative Solutions for adding Value to all Stakeholders, and Operate Globally as Professional Consulting Engineers.



Values

- Customer Satisfaction & Loyalty
- Technical Excellence with Professional Ethics
- Responsibility to Society
- Employee Dignity & Self-respect
- Organisational & Individual Growth

Our Value Drivers

Customer Focus

At TCE staying alive to the needs of the customer is of paramount importance. Customer focus is a key parameter of employee goals, thus maximising customer loyalty and fostering a culture of customer first.

World Class Talent

People are our most important asset and we believe in constantly upskilling our talent keeping pace with changing times. We are committed to ensuring an inclusive, innovative, meritocratic and people-centric culture.

Innovation Culture

We encourage a creative mindset by motivating employees to participate in ePride and Tata Innovista contests. We also have a mechanism to capture value additions at the project level and share the learnings with other project teams.

System Mindset

Our system mindset ensures parity of experience and delivery to our customers. Applications such as SmartSite™ and Suraksha deliver seamless, paperless and real-time project management experience.

Industry Expertise

Our deep domain expertise across various industry segments gives us a competitive advantage and helps design out-of-the-box technical solutions to save customer time and money.

Tata Values

We are committed to integrity and adhere to the Tata Code of Conduct developed by the Tata Group. We have institutionalised well thought out stringent practices and processes to ensure high standard of Ethical Conduct and Compliance.

Thought Leadership

As thought leaders in the industry, we hold the merit of shaping industry mindset, leading new domains, delivering complex & unique projects and value engineering.





of

Engineering Infinite Possibilities

**FY 1963
TO
FY 1972**

- Est. in 1962 as Tata Ebasco Engineering
- In 1968 TCE became a division of Tata Sons
- First 150MW Trombay Thermal Project in India
- First Equatorially mounted cylindrical radio telescope at Ooty

**FY 1973
TO
FY 1982**

- Asia's biggest water treatment plant of 2043 mld/day
- First 200MW thermal unit for India
- Pioneered seaborne coal handling systems in India, with a marine unloading facility

**FY 1983
TO
FY 1992**

- First 500MW Thermal Power Unit
- Asia's biggest (2.3m dia) optical telescope
- The tallest 275m chimney in India
- India's first computer based Operator Training Simulator (OTS)



FY 1993 TO FY 2002

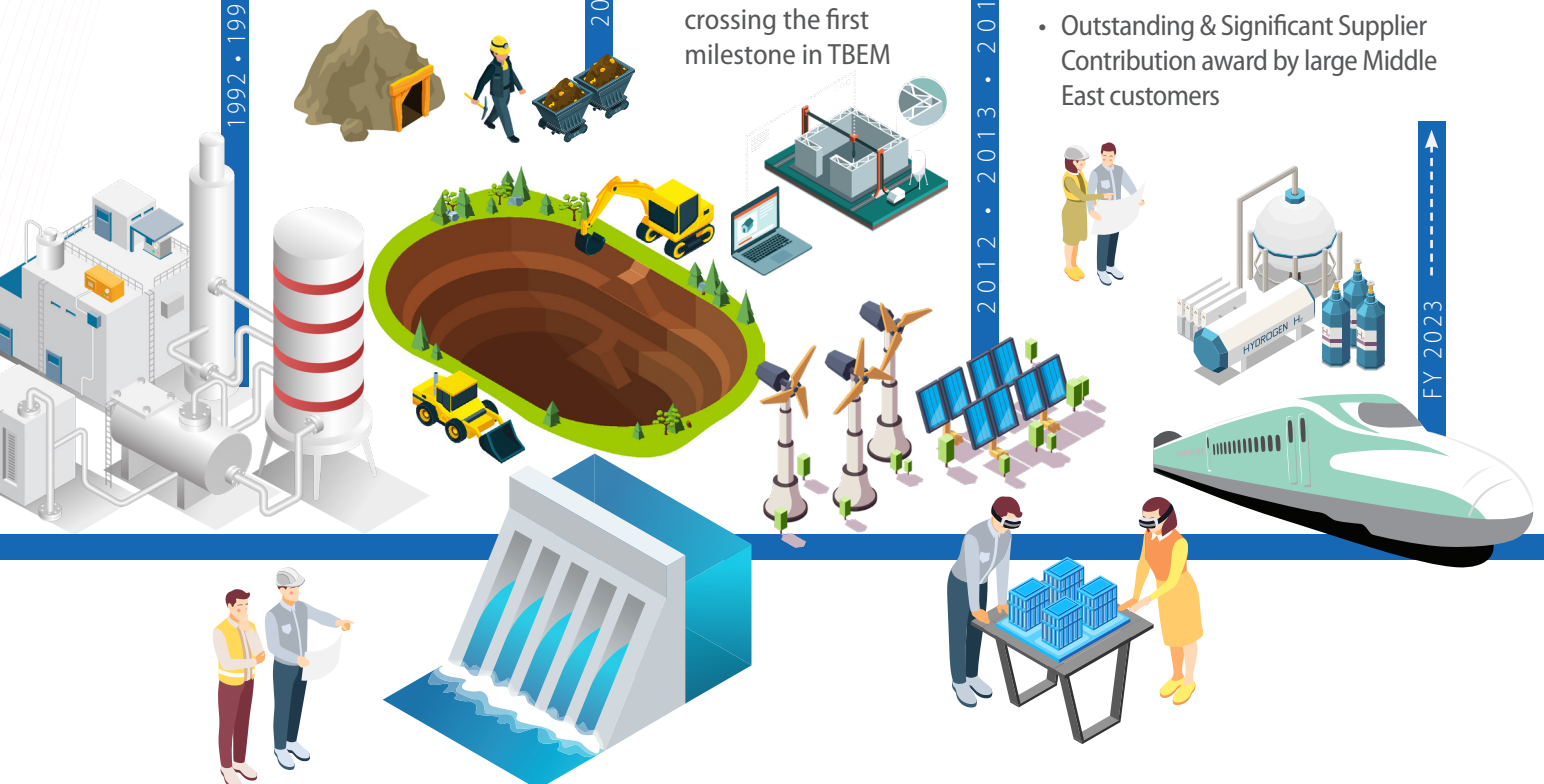
- World's largest steerable radio telescope (GMRT) with 30 dishes, each of 45m Dia
- India's first marine outfall (undersea tunnel) of 1826mld
- 3.5km length sewage disposal system in Mumbai
- India's first 800kV, 405km long transmission line
- India's first Barge Mounted Combined Cycle Power Plant

FY 2003 TO FY 2012

- India's first 300mld WTP with Pulsator and Aquazaur V Filters
- Asia's largest sewage pumping station of 1500mld peak capacity
- Highest Delta award for making a significant improvement in performance
- India's first creek tunnel of 3.6m dia
- Four tunnels of 3m dia using tunnel boring machine
- India's first 800MW supercritical thermal power station
- Serious Adoption recognition for crossing the first milestone in TBEM

FY 2013 TO FY 2022

- 3 MTPA Expansion – Coke Oven and by Product Plant
- Digital technology adoption across the company
- Winner of Tata Group innovation award
- Winner of India's Top 25 Innovative firm award
- Opening of ME branches at Abu-Dhabi & Saudi Arabia
- Est. Dedicated Engineering Centers (DEC), offering 4D Construction simulation
- Awarded 14 Smart City & 55 AMRUT cities
- Partnered ISRO GSLV successful launch
- Engineering review of 182 meter tall Statue of Unity
- Assessed as 'Emerging Industry Leaders' for crossing to 551-650 band
- PMC for India's first High-Speed Rail from Ahmedabad to Mumbai
- Outstanding & Significant Supplier Contribution award by large Middle East customers



Our Sectors

PLANT ENGINEERING CLUSTER

29%

Share of Revenue

POWER SECTOR

Nuclear, Green Power (Solar, Wind, Hydro), Thermal, Transmission & Distribution, New Technologies – (Digital & Hydrogen)

RESOURCES SECTOR

Hydrocarbons & Chemicals

Oil & Gas, Petrochemicals & Refineries, Food & Pharma, Specialty Chemicals

Mining & Metallurgy

Ferrous & Non-Ferrous, Geology & Mining, Beneficiation, Material Handling

33%

Share of Revenue

INFRASTRUCTURE CLUSTER

38%

Share of Revenue

INFRASTRUCTURE SECTOR

Water, Wastewater & Swage, Buildings & Facilities, Environment & Sustainable Infrastructure, Industrial & Manufacturing Facilities, Master Planning & Urban Development, Ports & Transportation

ECOFIRST SERVICES LTD. (Subsidiary)

Sustainable Integrated Design of Buildings, Urban Design, Sustainable Engineeronomics, Climate and Sustainability Services, Program Management, Digital & Modelling

Our Services

DESIGN & ENGINEERING SERVICE

- Project Concept Development
- Pre-feasibility & Feasibility Reports
- Detailed Project Reports
- Environmental Study Reports
- System Studies
- Frontend Engineering Design (FEED)
- OE Services
- Detailed Engineering

PROCUREMENT SERVICE

- Procurement Assistance
- Quality, Inspection & Equipment Management
- Vendor Quality Assessment
- Vendor Management
- Inquiry/Tender Preparation and Award

DIGITAL & ADVANCED TECHNOLOGIES SERVICE

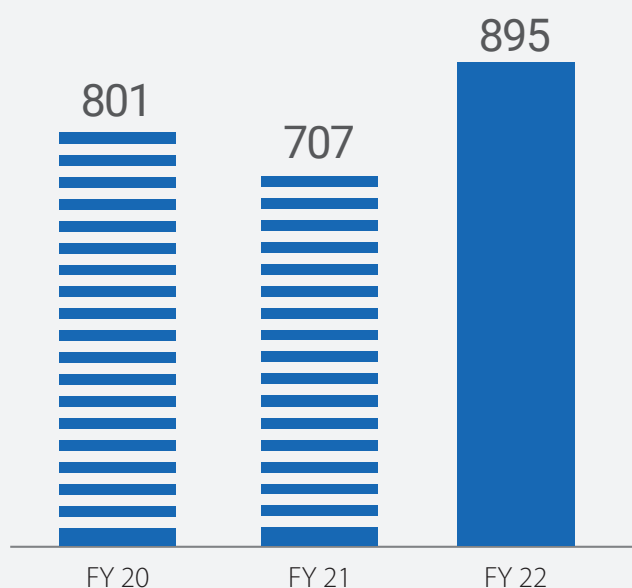
- Unified 3D Engineering, 4D, 5D Simulation
- Building Information Management
- Asset Digitisation & Asset Information Management
- Industry 4.0 & Asset Performance Management
- Product Engineering: Design and Analysis
- Turnkey Machine Development

PROJECT MANAGEMENT & SAFETY SERVICE

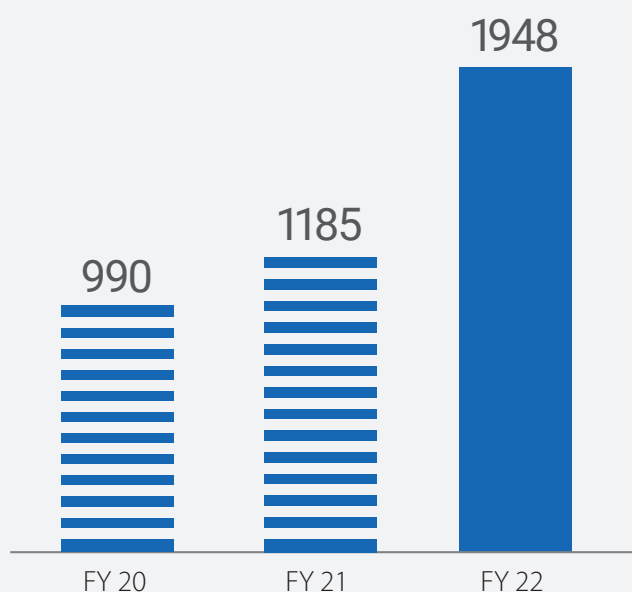
- Project Management
- Engineering & Constructability Review
- Construction Management / Supervision
- Program Management
- Interface Management
- Specialised Services
- Quality & Safety Audits
- Outage & Opex Management

Our Performance Highlights

TOTAL CONSOLIDATED INCOME



BUSINESS ACQUISITION



FY 2021-22 proved to be an exceptional year in the company's 60 year history. The year closed at Rs 895 Cr in total consolidated income and Rs 1948 Cr in order acquisition, highest ever.

895 Cr

Total Consolidated Income

1948 Cr

Business Acquisition

64%

Growth in Business Acquisition Over Previous Year



4529 kWh

**Energy Consumption
by TCE Offices**

NATURAL CAPITAL

Through our technology-enabled solutions, we also help our clients by engineering infinite possibilities to preserve natural resources and promote sustainability. Some of the projects that we undertake in water, waste management, smart cities, mining & metals, etc. are specifically addressed at natural capital enhancement for the environment as a whole.

82.5%

Utilisation of People

84%

Men

Diversity

16%

Women

16

**Training Person
days per employee**

HUMAN CAPITAL

People are at the heart of our business. Collective skills, knowledge and capabilities of our employees and contract staff help us engineer infinite possibilities.

MANUFACTURED CAPITAL

16

**Project, Sales &
Branch Offices**

Project design, engineering, construction, maintenance and management are the stages when we use materials, equipment, tools and technologies all form our manufactured capital.

INTELLECTUAL CAPITAL

Innovations around technologies for increasing project efficiency and creating knowledge continuously establish the company as a thought leader.

16 New Templatisation
Solutions

07 New Service
Offerings

25 Presentation at
Various Conferences

09 Whitepapers

76 on **63**
SMEs BIS Committees

390_{Cr} Value Addition
Benefits to Customers

28 Papers Published

25 Articles on Company
Website

02 New Patents Filed

05 Patents till Date

SOCIAL & RELATIONSHIP CAPITAL

Powered by our different flagship programmes, along with various volunteering initiatives, we are delivering on our social responsibility. Our Corporate Sustainability Policy framework offers the foundation to build our social well-being programmes by leveraging our core capabilities. Our primary focus areas are Sustainable Livelihood, Education, Infrastructure, Health and Hygiene, and Research and Development.

8513

**Corporate Volunteering
Person hours**

20005

Lives Touched

2.28 Cr

Invested in CSR projects

2426

Employees Volunteered



Company Awards

- **FIDIC Awards 2021**
Certificate of Merit for the Bangalore Water Supply and Sewerage Project (II)
- **13th CIDC Vishwakarma Awards 2022**
Safety, Health Environment in Construction
- **ACCE(I) - INSWAREB AWARD 2020**
Certificate of Merit for effective use of Pozzolana or blended cement
- **ICSI National Awards 2021**
Excellence in Corporate Governance
- **Asia's Best Employer Brand Awards 2021**
- **L&D Summit & Awards 2022**
Being conferred with the Evolution in L&D
- **Tata Innovista Finalist 2021**
- **CII Best Case Study 2021**
National Electrical Safety, Power Quality & Reliability Circle Competition
- **Global CSR Excellence Award 2022**
Rural Development / Upliftment
- **Best COVID19 Solution 2022**
Community Care
- **Finalist of CII Design Excellence Awards 2021**
Combating COVID19
- **The Institution of Engineers (India) 2021**
Innovative Industries Award for combating COVID19
- **SABIC Supplier Recognition Programme 2022**
Outstanding and Significant Contribution
- **Energy Leadership Award 2022**
Renewable Category
- **Energy Leadership Award 2022**
Non-renewable Category

People Awards

- CEO of the Year by Indian Achievers Forum
Amit Sharma
- Forbes India enlistment in "Top GC-Powerlist 2021" in March 2022
- General Counsel of the Year 2021 at the 7th Edition India Legal Summit & Awards 2021
- Governance Professional of the Year award by the Institute of Company Secretaries of India in 2021
Sachin Mishra
- Woman Leader of the Organisation
Nidhi Mehendiratta
- CFO100 Roll of Honor for exceptional contribution to corporate finance
Gurunandan Molahalliker
- Safety Influencer Award by World of Safety Asia
Josy Thopil
- Consulting Leader of the Year: Women in New Energy (WINE) Awards
D R Shanti
- Technology Leader of the Year: Women in New Energy (WINE) Awards
D Geethalakshmi

Our Presence

61%

Share of Total Revenue

INDIA

216

Cities



12% Share of
International
Revenue

MIDDLE EAST & AFRICA (MEA)

27% Share of
International
Revenue

REST OF WORLD (ROW)

NORTH AMERICA

1. Canada
2. Mexico
3. USA

SOUTH AMERICA

4. Brazil

EUROPE

5. France
6. Germany
7. Italy
8. Netherlands
9. Portugal
10. Spain
11. Switzerland
12. Turkey
13. UK
14. Ukraine

AFRICA

15. Algeria
16. Congo
17. Egypt
18. Ethiopia
19. Ghana
20. Kenya
21. Liberia
22. Libya
23. Malawi
24. Mauritius
25. Mozambique
26. Nigeria
27. Rwanda
28. Senegal
29. Seychelles
30. Sierra Leone
31. South Africa
32. Sudan
33. Tanzania
34. Uganda
35. Zambia

AUSTRALIA

36. Brisbane
37. Sydney

ASIA

38. Bahrain
39. Bangladesh
40. Bhutan
41. China
42. Fiji Islands
43. Indonesia
44. Japan
45. Jordan
46. Kuwait
47. Laos
48. Lebanon
49. Malaysia
50. Myanmar
51. Nepal
52. Oman
53. Philippines
54. Qatar
55. Saudi Arabia
56. Singapore
57. South Korea
58. Sri Lanka
59. Thailand
60. UAE
61. Uzbekistan
62. Vietnam
63. Yemen